



# FACT SHEET



[www.bansainairesort.com](http://www.bansainairesort.com) | Resort Number: + 66 75 819 333



**Ban Sainai Resort;** *a 4 stars green resort* opened since July 2013 is peacefully located in the private 6.7 acres land in the heart of Aonang, Krabi Province of Thailand. The resort blended harmoniously amidst the lush tropical gardens, ponds, stream, flora and fauna. It is a great spot to just relax and unwind, suitable for those peaceful holiday seekers and natural lovers. Our resort's name is inspired by the name of the ancient local village of our current location. With the embrace of the Southern Thai local cultural philosophy that brings it to life through the contemporary and worries free rustic cottage design.

**Experience & Unwind** in this peaceful paradise; you are invited to rejuvenate yourself and soul through the unique private detached thatched-roof cottages inspired from the Southern style architectural wisdom along with the loveliest, the friendliest and most enthusiastic team that will remark the stay a once of a lifetime.

## Awards:

Winner of Trip Advisor's Travelers' Choice Awards 2019: **Top 25 Hotels Thailand**

Winner of Trip Advisor's Travelers' Choice Awards 2018: **Top 25 Best Service Hotels Thailand**

Winner of Trip Expert 2022, 2021, 2018 & 2017: **Expert's Choice Award**

Winner of Trip Advisor's 2024, 2023, 2022, 2021, 2020, 2019, 2018, 2017, 2016 & 2015:  
**Certificate of Excellence**

Winner of Trip Advisor's Travelers' Choice Awards 2016 & 2015: **Top 25 Small Hotels Thailand**





The resort's 38 cottages are set amidst the tropical green gardens, and coconut groves. All featured the private terrace, fully equipped; with spacious en suite bathroom and in-room amenities in detached and semi-detached thatched-roof style cottage.

## ACCOMMODATION

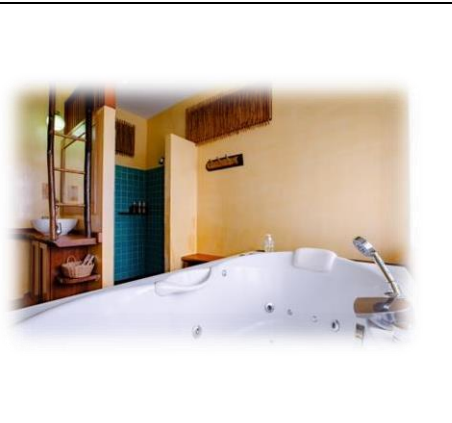
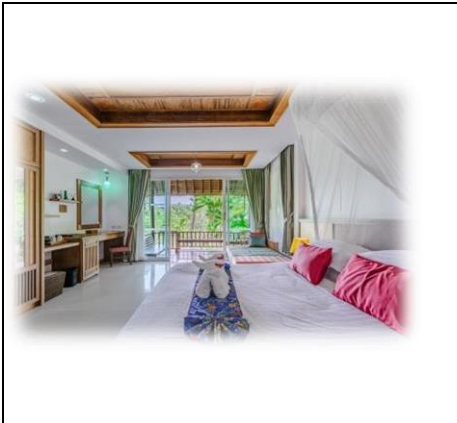
COTTAGE TYPE	NUMBER (AVAILABILITY)	SIZE	LOCATION	OCCUPANCY	VIEW	BEDS & COTTAGE FEATURES	BATHROOMS
The Sainai Jacuzzi Cottage	5	49m2 (527 ft2)	THE PALM ZONE	2 adults, 1 day bed could be set up with surcharge.	Garden view	Detached, 1 king bed	Jacuzzi bathtub with separate shower area
The Coconut Cottage	7	55 m2 (592 ft2)	THE PALM ZONE	2 adults, 1 day bed could be set up with surcharge.	Partial pool view, garden view	Detached, 1 king bed	<b>Round-shaped deep soaking bath tub</b> and separate shower area
The Pano Cliff View Cottage	2	55 m2 (592 ft2)	THE PALM ZONE	2 adults, 1 day bed could be set up with surcharge.	<b>Guaranteed Cliff View from bathroom</b>	Detached, 1 king bed	<b>Round-shaped deep soaking bath tub</b> and separate shower area
Triplet Premier Cottage	2	60 m2 (646 sq2)	THE POND ZONE	3 adults only. Extra bed <b>could not</b> be added for this cottage type.	Garden view	Detached, 1 king bed and 1 single bed	Jetted bathtub with separate shower area
Sainai Forest Cottage	9	55 m2 (592 sq2)	THE PALM ZONE	2 adults, 1 day bed could be set up with surcharge.	Garden view	Detached, 1 king bed	Deep soaking bathtub and separate shower area
Grand Pond View Cottage	7	60 m2 (646 sq2)	THE POND ZONE	2 adults, 1 day bed could be set up with surcharge.	Partial cliff view, pond view	Detached, 1 king bed with hammock at terrace	Jetted bathtub with separate shower area
Tropical Family Cottage	4	125 m2 (1345 ft2)	THE POND ZONE	4 adults, 2 day beds could be set up with surcharge.	Garden view	Detached, connecting door, 2 bedrooms (1 king bed & 2 single beds)	2 bathrooms; 1 with deep soaking bath tub (both with separate shower areas)
Sainai Pool Villa (newly renovated)	2	159 m2 (1711 ft2)	THE POND ZONE	4 adults, 2 day beds could be set up with surcharge.	<b>Guaranteed Cliff View from the Private Pool.</b>	Detached, connecting door, 2 bedrooms (2 kingbeds)	2 bathrooms; both with deep soaking bath tub and separate shower areas.

**Remark:** All cottages are with private terraces. The Palm Zone is located near reception desk, swimming pool, fitness center and Dok Kaew Massage and was opened since July 2013 and had been renovated every year as same as the Pond Zone that is located near Sai Nai Restaurant that had been opened in December 2015.

Newly constructed types since 2024 are the new born Sainai Forest and Sainai Pool Villa (two bedrooms)

**\*\*\*Distance between the Palm Zone and the Pond Zone is approximately 300 meters away\*\*\***





**THE SAINAI JACUZZI COTTAGE**

Five of our Sainai Jacuzzi Cottages opened in 2013 and had just been renovated since 2024. They are all located near the pool, spa, and fitness center. It is as well in short distanceto Sai Nai Restaurant, the main restaurant serving breakfast delicacy. The cottages featured an en-suite bathroom with jetted bathtub and a separate shower area. The terrace offers a green garden, mountain and lotus pond view.



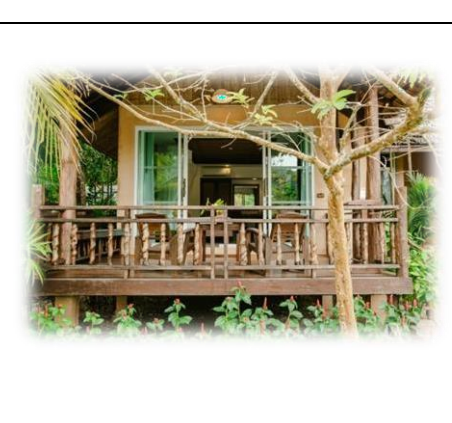
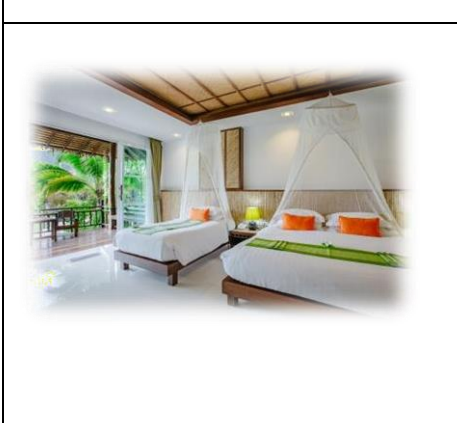
**THE COCONUT COTTAGE**

Seven of our Coconut Cottages had been welcomed guests after the Garden Cottage in 2013. This new look of cottage type had anyhow been fully renovated in 2019 and had continuously been touched up each year. They are all fully equipped withan en suite bathroom offering the round shaped deep soaking bathtub with separate shower area. Some of the cottages offer pool view whilst the rest offers the green garden view. Cottage size was widened from original plan of 49 sqm. to 55 sqm.



**THE PANO CLIFF VIEW COTTAGE**

These cottages had been welcomed guests since year 2019; and are fully equipped with an en suite bathroom offering the round shaped deep soaking bathtub with separate shower area. This cottage offered terrace with coconut grove view and the highlight is the limestone cliff view through the mirror bathroom for the limestone cliff panoramic view. You can enjoy watching this Tropicana nature while soaking in the warm bath. The size including terrace of this type is at 55 sqm.



**TRIPLET PREMIER COTTAGE**

Two of our Triplet Premier Cottages are opened in December 2015. It is in semi-detached style offering private entrance. These two cottages are only the type with one king bed and one single bed, suitable for group of three. Extra bed could not be added due to its size limitation. This room type located next to Sainai Pool Villa and The Tropical Family Cottage, and Grand Pond View Cottages. It is as well in close proximity to Sai Nai Restaurant.



### SAINAI FOREST

Nine of our Sainai Forest are newly constructed since May 2024 and ready to open the doors to welcome our guests in November 2024 onwards. This type had been emerged from the previous Garden Cottage. Therefore, the location of this type is in the center of the resort, not far from pool nor the reception area. This cottage type offered great space with total new look but still keeping in green concept that align well with the serene and green environment surrounded.



### GRAND POND VIEW COTTAGE *(Adult Only)*

Seven of our Grand Pond View Cottages opened in December 2015 and are for adult only. This cottage type is near the Sai Nai Restaurant. A few cottages offer the sheer limestone cliff view whilst the rest offer green and pond view. The Grand Pond View Cottages accept only guests of more than 12 years old due to safety and security reason unless the letter of agreement is signed by parents. *The terrace hammock is provided in this cottage type.*



### TROPICAL FAMILY COTTAGE

Four of Tropical Family Cottages opened in December 2015 and had been continuously renovated and touched up every single year. The cottage type is ideal for family or group of friends offering the connecting door that separate two bedrooms (king sized bed & two single beds). Each bedroom featured an individual en suite bathroom and with deep soaking grand size bathtub with separate shower area. This cottage is the only type offering fully furnished kitchenette and kitchen equipment with spacious terrace overlooking the greenery.



### SAINAI POOL VILLA

Two of our Sainai Pool Villas indeed are our previous four cliff view jacuzzi cottage. Adding in the private pool creating these two new unique two-bedrooms pool villas in style. The location of the villa is not too far from the Sai Nai restaurant where breakfast is served daily and with guaranteed of Giant Cliff View from the private pool itself had created this a little heaven on earth. You can expect the moments to enjoy watching the lovely scenery from our Sainai Pool Villa that will be ready to serve our guests in November 2024 onwards.







## RESTAURANTS:

Ban Sainai Resort serves tasty cuisine delicacy in casual dining experience at respective outlets below;

### ❖ SAI NAI RESTAURANT

Sai Nai Restaurant features international cuisine and authentic Thai delicacy. The restaurant is laying at the edge of the serene and tranquil pond. It is designed in a style of the outdoor Southern Architectural House offering the tropical unique experience during time when breakfast is served. The Sai Nai Restaurant seating capacity is suitable for 50 diners and is divided into zoning. The terrace zone with 20 seats whilst the indoor zone carrying 30 seating capacity and is preserved for Halal certified restaurant area with its strict policy (neither pork products nor alcoholic beverages allowed.)

**Extension number:** 2005

**Breakfast service hours:** 06.30 hrs. – 10.30 hrs.

**Seating capacity:** 20 seats for terrace zone and 30 seats for indoor Halal zone (50 seats in total).

**Breakfast style:** Buffet Breakfast and additional made to order freshly cooked choices for unlimited. Vegetarian or Gluten free breakfast as well as take away breakfast basket for early departure could be arranged with prior notice;

**Breakfast additional charge:**

- Adult 350 THB/ person
- Kid of age over 12 years breakfast charge is at adult price
- Kid of age between 6-12 years, 200 baht / person
- Kid of age less than 6 years received complimentary breakfast

**The Sai Nai Restaurant is holding the Halal Certificate. The indoor seating area is with pork products and alcoholic beverages prohibited.**

### ❖ POOL SALA

The Pool Sala features range of variety of non-alcoholic beverages such as freshly brewed coffee, tea mocktail, fresh juices or smoothies. The Pool Sala is also a venue that you could have your lunch served by the pool. The menu provides variety ranging from international cuisine to authentic Thai cuisine. Kid's menu or vegetarian menu is as well available. Please check with our FB crews.

**Extension number:** 2007

**Beverage service hours:** 11.00 hrs. – 20.00 hrs.

**Seating capacity:** 20 seats

**Lunch & Early Dinner service hours:** 11.30 hrs. – 20:00 hrs.  
Last Order

### ❖ IN ROOM DINING

Experience the authentic cuisine at your leisure. In room dining offers the cuisine in the privacy of your cottage with its variety ranging from international and Thai authentic cuisine.

**Extension number:** 2005/ 2007

**Operating Time:** from 11.30 hrs. – 20.00 hrs.  
(Last order at 19.45 hrs.)

*\*Operation time may change subject to season change.*



## SALTWATER SWIMMING POOL

One of the highlights at Ban Sainai Resort is definitely our saltwater pool that is harmoniously located in the midst of the property. Because we care so we have provided the saltwater or saline system pool as it leaves much fewer irritations to those with fragile skins. Because of the way chlorine is generated in a saltwater pool, the chlorine levels are generally much lower. The lower chlorine levels means the salt water pools are less drying on the skin, and eyes. This as well will not fade colors as quickly from the bathing suits. Fragile skin swimmers could experience fewer irritations from chlorine.

### Service hours:

08.00 hrs. – 20.00 hrs. *(no lifeguard on duty)*

**Pool Dimension:** Kid's pool area (60 cm. depth)

**Adults' area:** 120-160 cm. deepest

**Sun loungers seating capacity:** 30 seats



## MASSAGE SERVICE: DOK KAEW MASSAGE

Rejuvenate both your body and soul, and unwind in our cozy and temporary style wooden shelter near the lovely saltwater pool. With the extensive range of massage services and our well experienced therapists; we offered you only the premium quality products to ensure you an enchanting and relaxing experience ever. Dok Kaew Massage by Ban Sainai Resort features highly trained, certified and licensed therapists. Our therapists are more than delighted and dedicated to improve the health and achieve a balanced lifestyle.

**Extension Number:** 0 (reserved with Front Desk)

### Service hours:

10.00 hrs. – 18.30 hrs. (last treatment finished)

**For Pre Arrival:** For your own safety; we advise you to arrive 15 minutes before your appointment for registration and consultation process.

**Venue:** Dok Kaew Massage (nearby swimming pool)

### Capacity:

- ❖ 2 beds for Thai massage, 4 beds for oil massage, 2 chairs for foot massage and 2 bathtubs.

Walk-ins are welcomed. But with only limited space, **Advance booking is highly recommended.**

**Notice:** Massage service could only be operated in Dok Kaew Massage only.  
*(In room massage service is not available)*

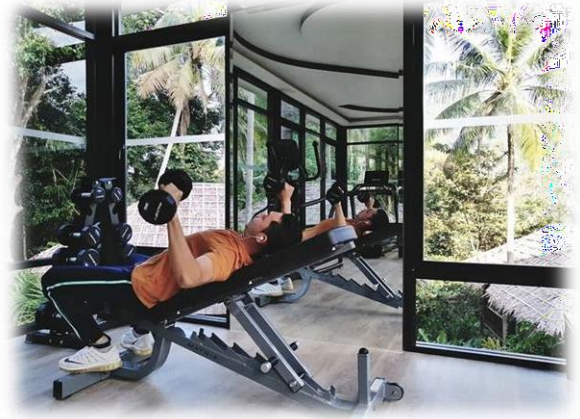


## BSN FITNESS CENTER

What else could be better than a work out with the view? Not just an ordinary view, yet a sheer limestone cliff view amidst this green lush tropical garden. Our fitness includes 2 treadmills, 1 elliptical machine, and dumbbells.

### Service hours:

07.00 hrs. – 20.00 hrs. (no instructor on site)





## ACTIVITIES & EXCURSIONS

It is more than a pleasure to ensure that while staying at Ban Sainai Resort, you are well pampered and well recommended for the Must Do Activities and Must Visit Places. Don't be shy to dial **magic number "0"** for assistance of such exciting excursions or tour programs.

Krabi is a province on the coast line of the Andaman Sea offering plenty of natural attractions from the land to the sea explorer. We offer half, or full day trips with experienced and reliable tour operators with highest safety and hygiene concerned.

Or if you wish to just relax in our resort's area or by the pool. Don't hesitate to join our free and fun activities (for high seasons only). These had been well operated and prepared by the representatives of each department ranging from the guided garden discovery, eco or towel origami, don't hesitate to check for more details with front desk.

*\*Activities are operated by our affiliated partners\**







## Ban Sainai Resort | Aonang's Green Getaway

Aonang • Krabi • Thailand

*Experience & Unwind: Enjoy Your Peaceful Holiday!*



**Telephone:** +66 75 819 333 **Fax:** +66 75 819 339

**Sales Mobile:** +66 84 295 1112

**Email:** [sales@bansainairesort.com](mailto:sales@bansainairesort.com) / [info@bansainairesort.com](mailto:info@bansainairesort.com)

**Line Official Account:** @bansainairesort

<https://www.bansainairesort.com>

**Connect with us at**

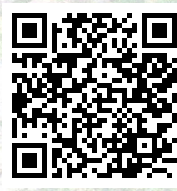
**Website**



**Facebook**



**Instagram**



**TripAdvisor**



**All Contents and Images © 2024**

550 Soi Aonang 11/1, Moo 2, Tambon Aonang, Amphur Muang, Krabi, 81180